

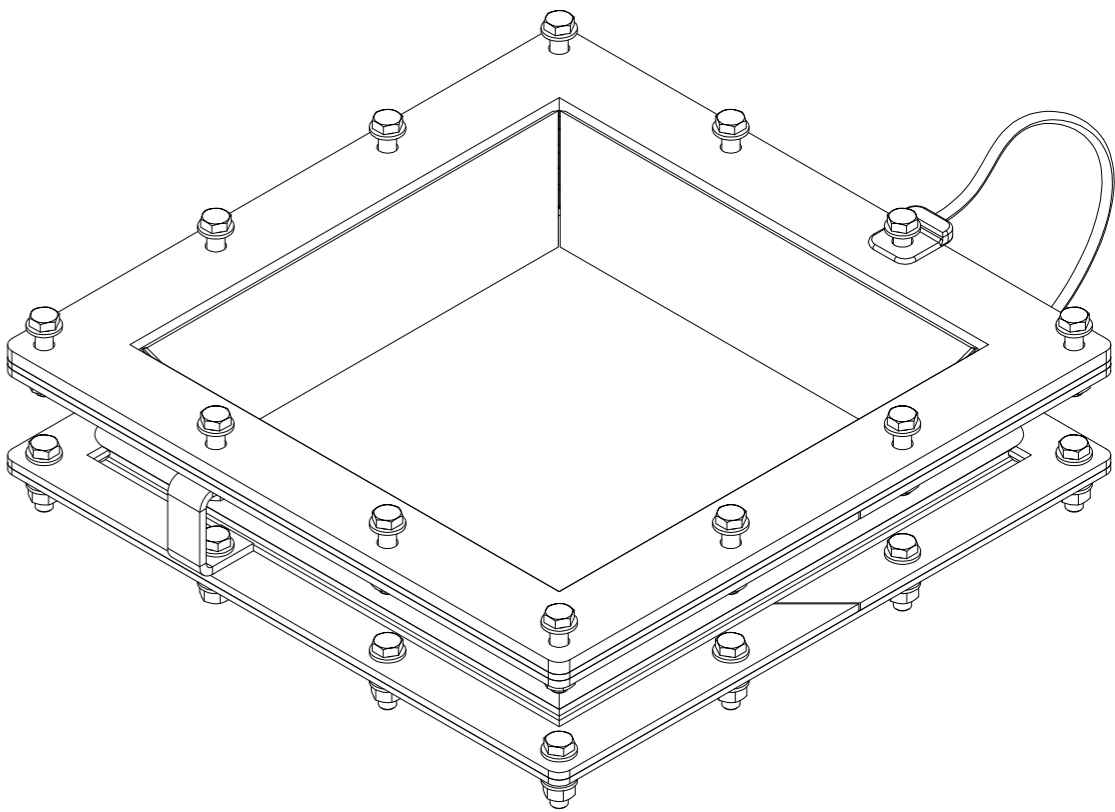
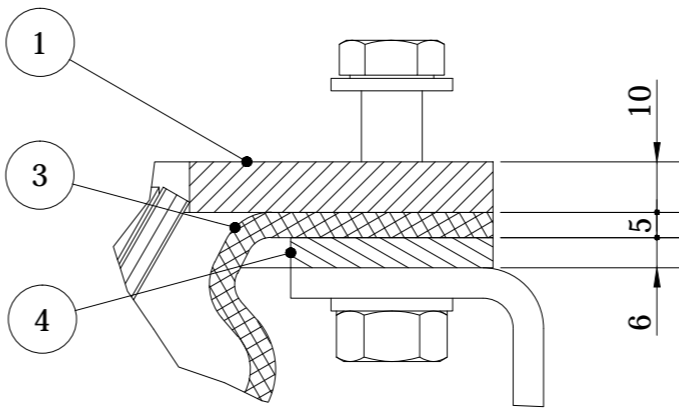
REFERENCE DRAWING:
GENERAL ARRANGEMENT: 140765-EJ-0001

NOTES: TEMPERATURE: 250°C



ITEM:

- 1ETG10AJ003MR01
- 1ETG20AB001MR01
- 1ETG30AF001MR01
- 1ETG30AF001MR02

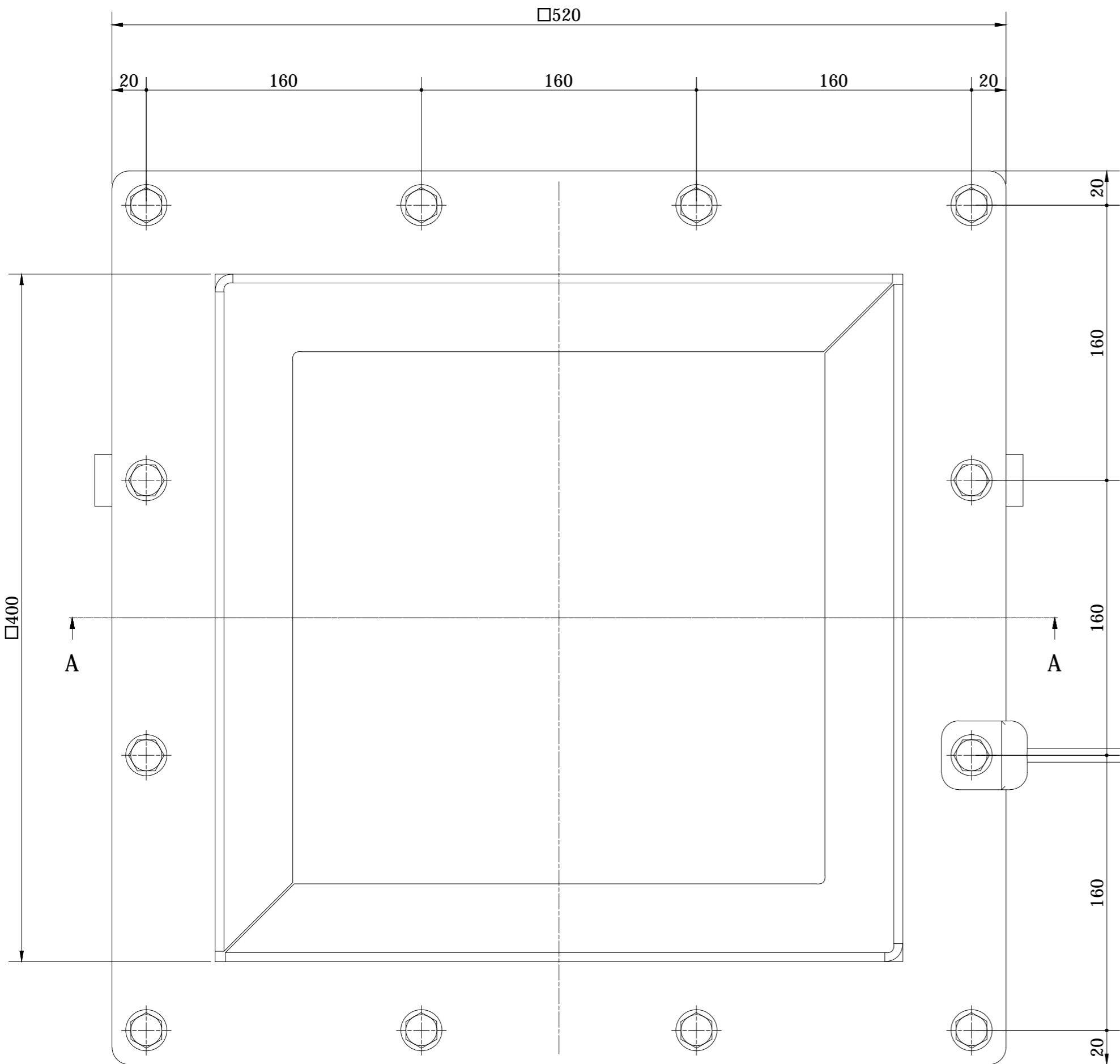
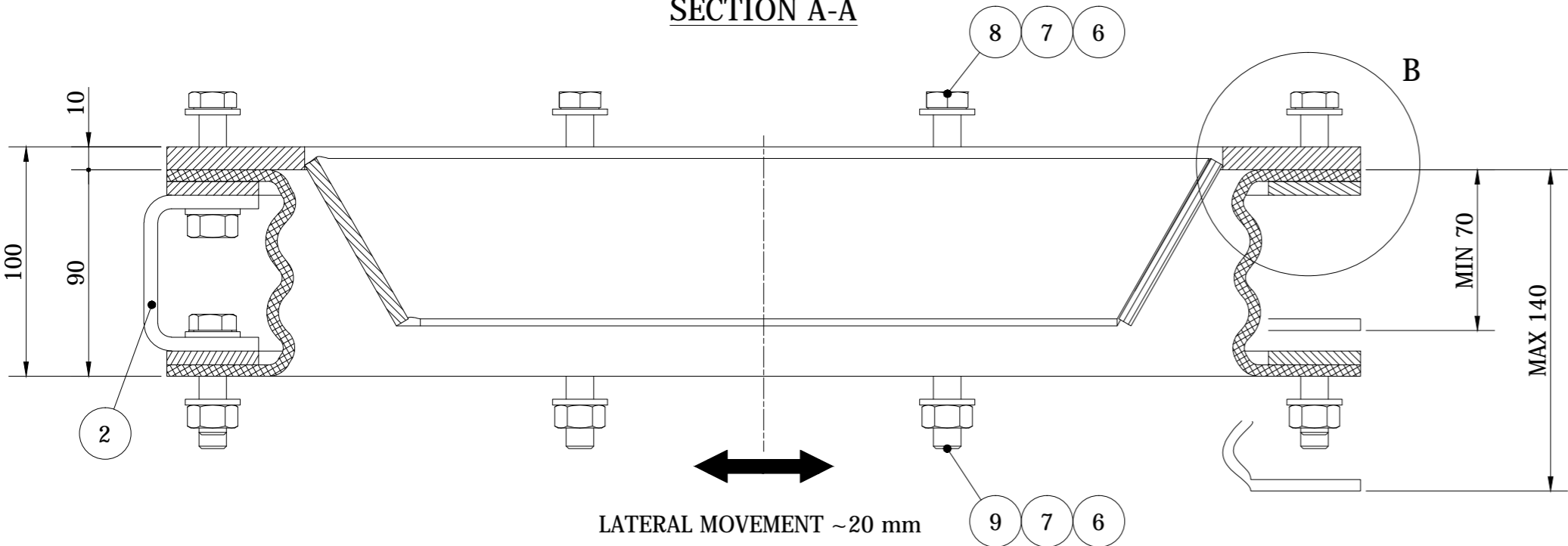
DETAIL B (1 : 1.5)



9	BOLT TE	12	0,7	Comm.	UNI 5739 - M12 x 45			
8	BOLT TE	12	0,8	Comm.	UNI 5739 - M12 x 55			
7	FLAT WASHER	48	0,3	Comm.	UNI 6592 - 13 x 24			
6	NUT	24	0,4	Comm.	UNI 5588 - M12 - 1,75			
5	ELECTRICAL EARTHING CONTINUITY L=450	1	0,3	Comm.				
4	FLANGE	4	7,0	S 275 JR	140765-EJ-0105			
3	TEXTILE	1	1,1	FIBER GLASS	140765-EJ-0204			
2	BRACKET	2	0,4	S 275 JR	140765-EJ-0103			
1	FLANGE - HOPPER	1	13,8	S 275 JR	140765-EJ-0202			
Pos.	Description	Q.ty	Weight	Material	Dwg/Code	Mark	Icon	
Tolleranza generale per superfici lavorate: H13-h13					General tolerance for machined surfaces : H13-h13			

00	Issued for construction		24/06/2014	MAFFI				
01	Revised after comments 11/07/2014		15/07/2014	MAFFI				
Rev.	Descrizione/Description		Data/Date	Eseg./Prep'd	Contr./Chk'd	Appr./Appr'd		
CLIENTE/CLIENT			TIPO MACCHINA/EQUIPMENT		TAGLIA/SIZE		Q.TA/Q.TY	
					T 400		04	
 <div>MOTRIDAL</div> <div>Bulk Handling Equipment & Plants</div>			DATI DI PROGETTO/PROJECT DATA			Peso/Weight		
			Comm. / Job Nr.			24,9 kg		
			Ordine/Order Nr.					
			File name : 140765-EJ-0200-01-AFC.dwg			SCALA/SCALE		
IMPIANTO/PLANT			DISEGNO No./DRAWING Nr.			1:5		
			140765-EJ-0200					
TITOLO/TITLE			SOSTITUISCE DIS. No./SUBSTITUTES DWG Nr.			Revision		
<div>Machine Assembly</div> <div>EXPANSION JOINT 400x400</div>						01		
			SOSTITUITO DA DIS. No./SUBSTITUTED BY DWG Nr.			Fg. d/Sh. of		
IL PRESENTE DOCUMENTO E' PROPRIETA' DELLA MOTRIDAL. A TERMINI DI LEGGE OGNI DIRITTO E' RISERVATO THIS DOCUMENT IS PROPERTY OF MOTRIDAL. ALL RIGHT ARE RESERVED ACCORDING TO LAW				BY CAD - NON MODIFICARE MANUALMENTE / DO NOT CHANGE MANUALLY				A2

SECTION A-A



Proj. ref: 12174_BIALYSTOK

Keppel Seghers Status: ASB

Dwg. nr: 12174_451_01_060309_0

Handled: HLE Date: 20/11/15 Check: SDG Appr: BVA